

Parasol BASES



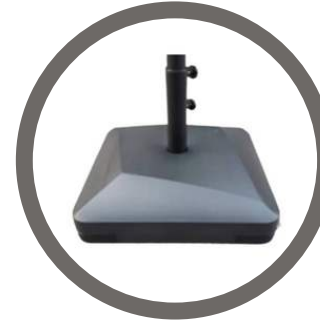
25kg or 40kg Black Resin Base

- 50cm diameter
- Accommodates 35mm - 48mm poles
- Concrete core with resin sealed covering
- 25kg is ideal for 2m
- 40kg for 2m or 2.5m



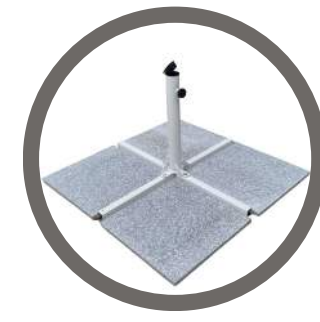
35kg or 55kg Granite Base

- With handle
- 35kg: With 2 inbuilt wheels
- 55kg: 4 coaster style wheels (with locks)
- Accommodates 35mm - 48mm poles
- Ideal for 2m - 2.5m parasols



43l Water-filled Base

- Premium black plastic base
- 43kg in weight with water / 65kg with water + sand
- 54cm x 21cm x 54cm
- With wheels
- Accommodates 35mm / 48mm poles
- Ideal for 2.5m - 3m parasols



73kg / 100kg Metal Cross Base

- White or black metal cross base (comes collapsed)
- Comes with 4 inserts:
 - 73kg - wood effect inserts / 100kg - concrete inserts
- Ideal for easy transportation / moving
- Accommodates 35mm - 48mm
- From 2.5m - 4m parasols



50kg or 90kg or 120kg Premium Metal Base

- Brushed solid metal base
- Comes with 4 inserts
 - 50kg: Granite inserts / 90kg: Wood-effect inserts / 120kg: Concrete inserts
- Ultra study and strong option
- Accommodates 48mm - 60mm poles
- From 2.5m - 4m parasols



Our parasols are designed to be secured with a base through a table. They don't have to be used in this way but with the British weather, we can't offer a guarantee should they be used free standing or any other way

NOTE: Prices exclusive of VAT and delivery charges



Base Guide

	22kg Plastic Water Filled	43kg Plastic Water Filled	25kg Resin	40kg Resin	35kg Granite	55kg Granite	73kg Metal Cross	90kg Metal Cross	120kg Metal Cross	50kg Premium Metal	90kg Premium Metal	120kg Premium Metal
2m x 2m	●	●	●	●	●	●						
2m	●	●	●	●	●	●						
2.5m x 2.5m		●		●	●	●	●			●		
2.5m		●		●	●	●	●			●		
3m x 3m*							●	●	●		●	●
4m x 4m*									●			●

NOTES

- The above is a guide, the appropriate base weight should take into account the location and environment in which the parasol will be used. Please ask for more thorough guidance when placing your order.
- This guide assumes that the parasol & base will be used in conjunction with a table. They don't have to be used in this way but with the British weather, we can't offer a guarantee should they be used free standing or in any other way.
- *Our Strong Parasols have thicker central poles so not all of our bases are compatible with these. Please ask for more information.